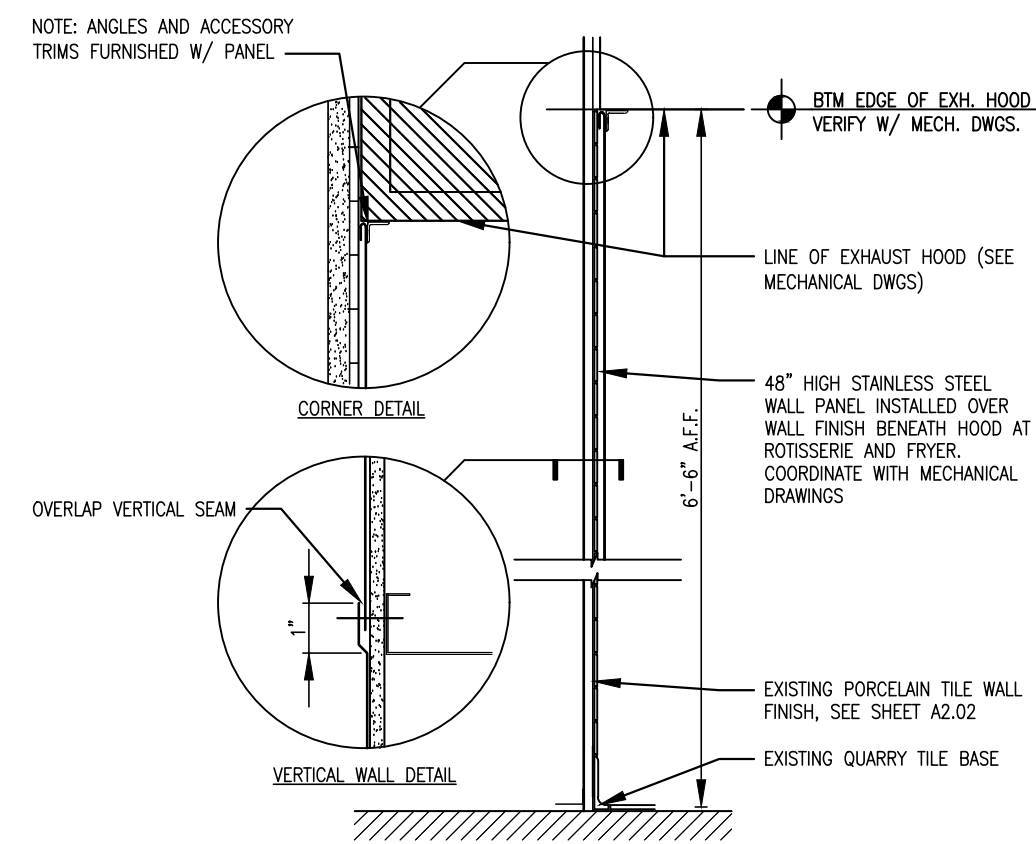


1 DETAIL @ ALUMINUM STOREFRONT OUTSIDE CORNER TRANSITION
A5.01 3" = 1'-0"

2 DETAIL @ S.S. CORNER GUARD SURROUND
A5.01 3" = 1'-0"

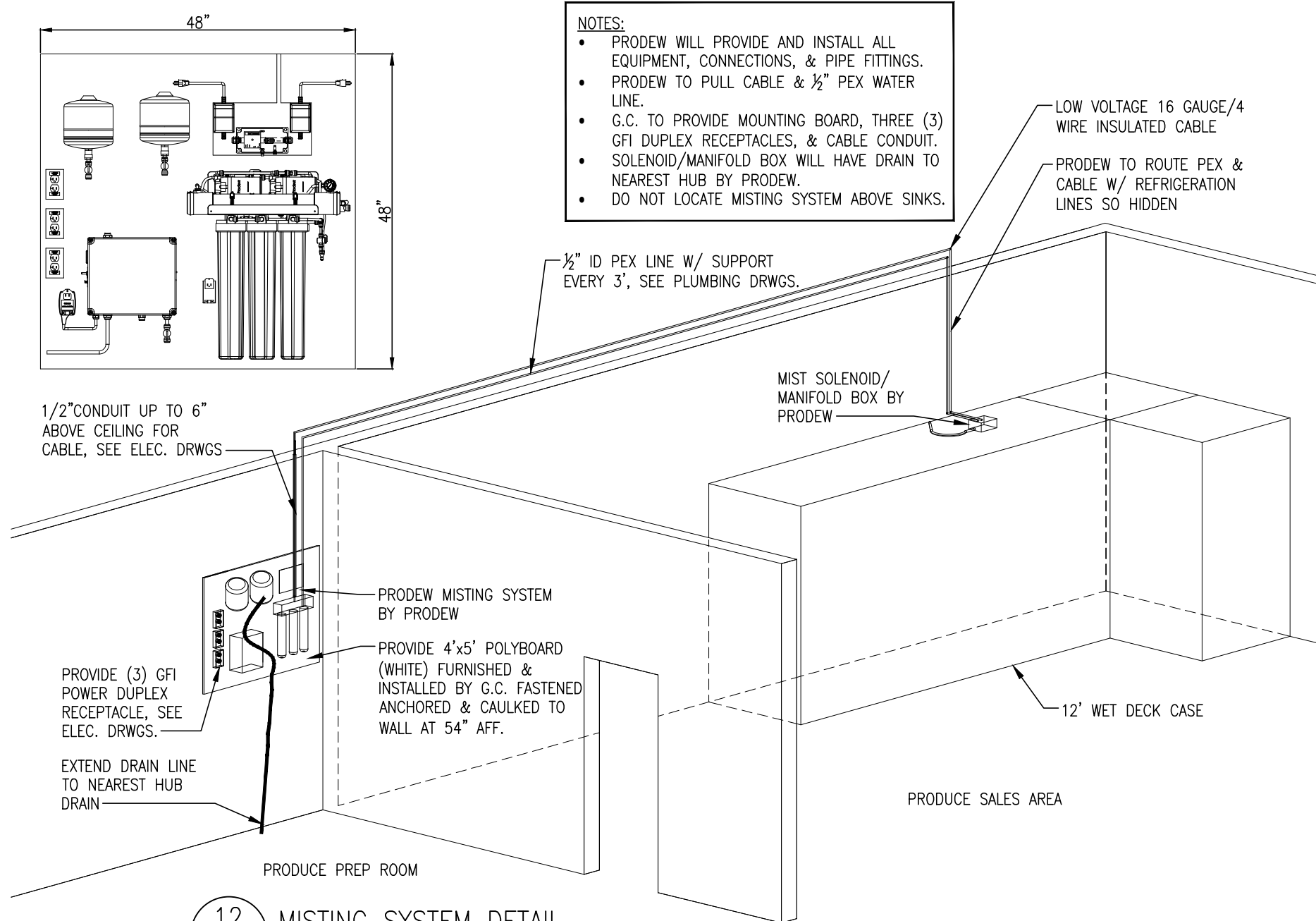
3 DETAIL @ S.S. JAMB WRAP (TRAFFIC DOOR)
A5.01 3" = 1'-0"



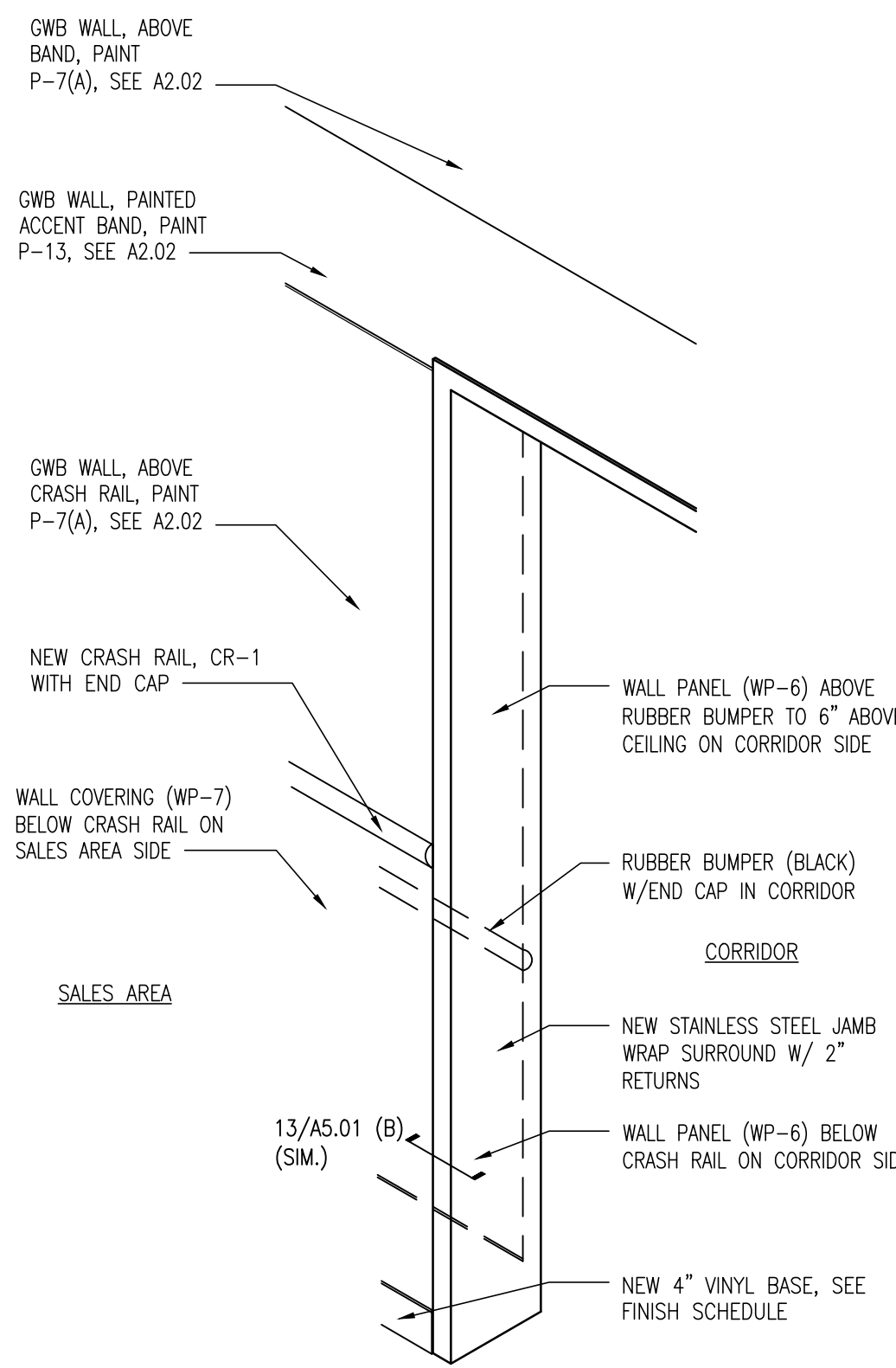
7 STAINLESS STEEL WALL PANEL
A5.01 1/2" = 1'-0"

8 INTERIOR GUARDPOST DETAIL
A5.01 1/2"=1'-0"

9 SUSPENDED BOAT RACK AT LAY-IN CEILING
A5.01 1/2"=1'-0"



12 MISTING SYSTEM DETAIL
A5.01 N.T.S.



4 DETAIL @ CORRIDOR JAMB WRAP
A5.01 3/4" = 1'-0"

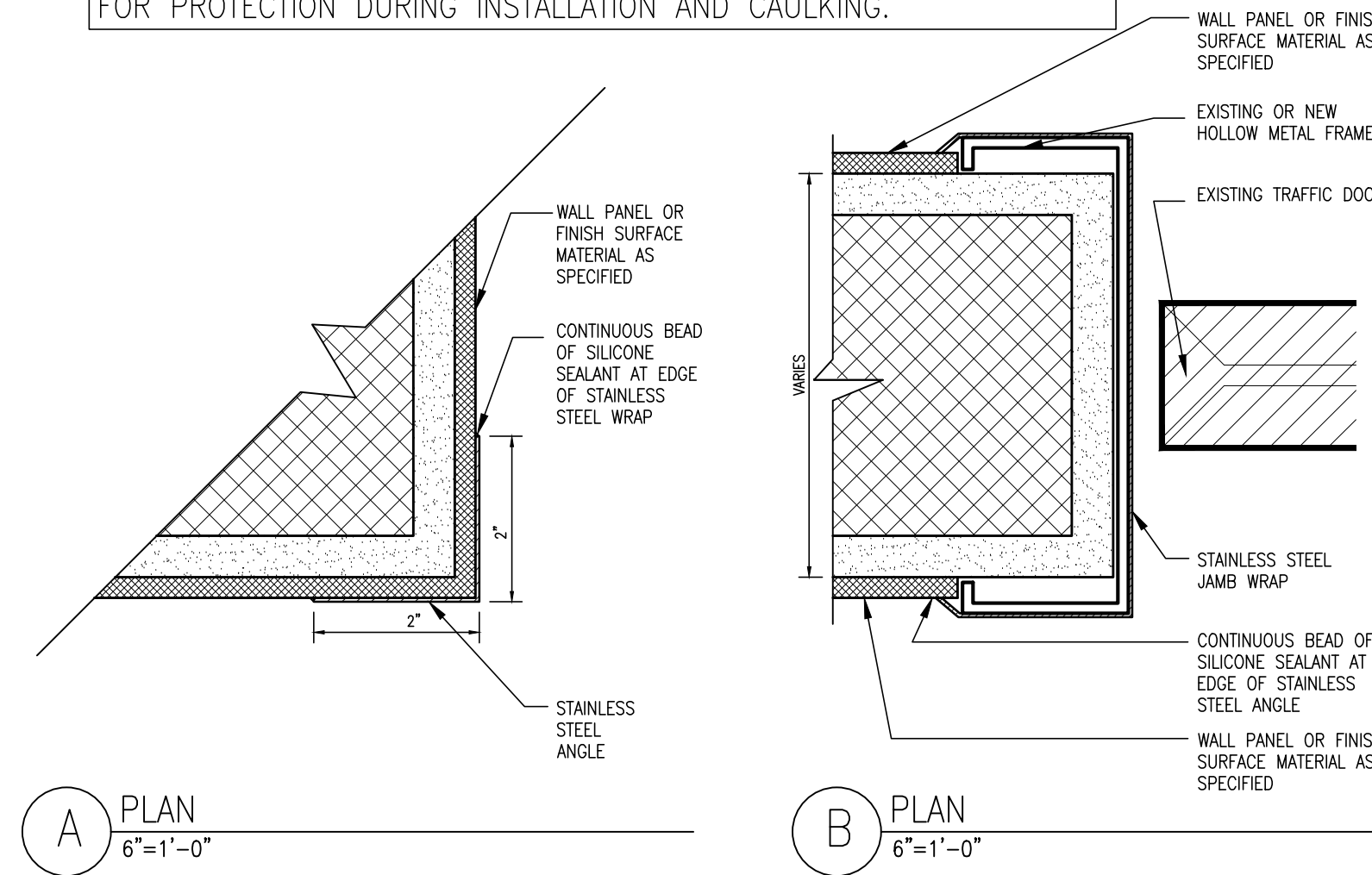
5 DETAIL @ VESTIBULE WALL
A5.01 3/4" = 1'-0"

10 TRENCH COVER DETAIL
A5.01 1 1/2" = 1'-0"

UTILIZE THE GUIDELINES BELOW FOR STAINLESS STEEL WRAPS, CORNER GUARDS, THRESHOLDS, ETC.

1. COLUMN WRAPS - 22 GA., FINISH #3.
2. CORNER GUARDS - 18 GA., FINISH #3. NON-HEMMED EDGES.
3. DOOR FRAME WRAPS - 18 GA., FINISH #3.
4. OVEN/HOOD FLASHING - 20 GA., FINISH #3.
5. DOOR PLATES - 18 GA., FINISH #3.
6. THRESHOLDS - 11 GA., FINISH #2B.

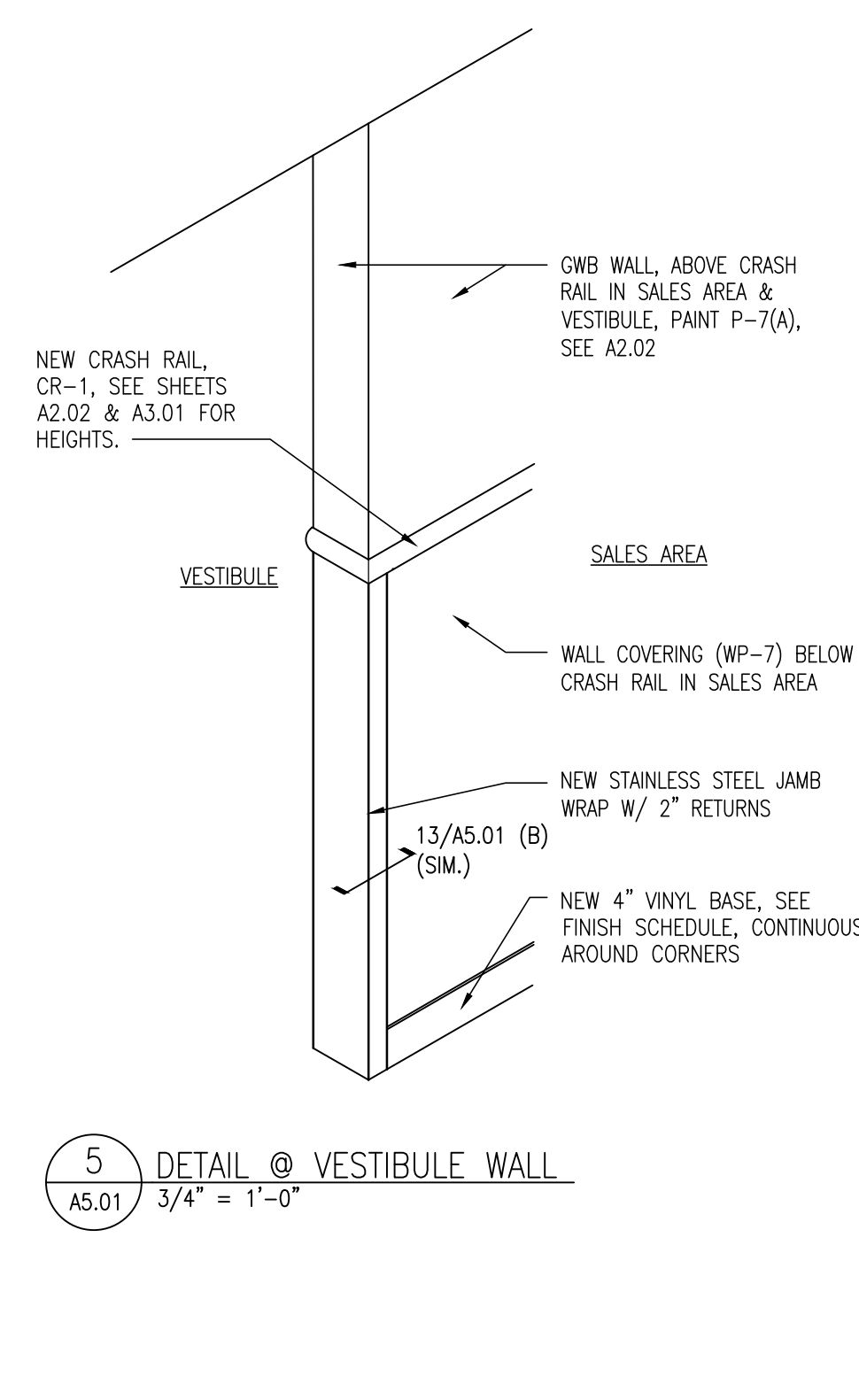
ALL MATERIAL IS STAINLESS STEEL AND SHALL BE PVC COVERED FOR PROTECTION DURING INSTALLATION AND CAULKING.



A PLAN
6"=1'-0"

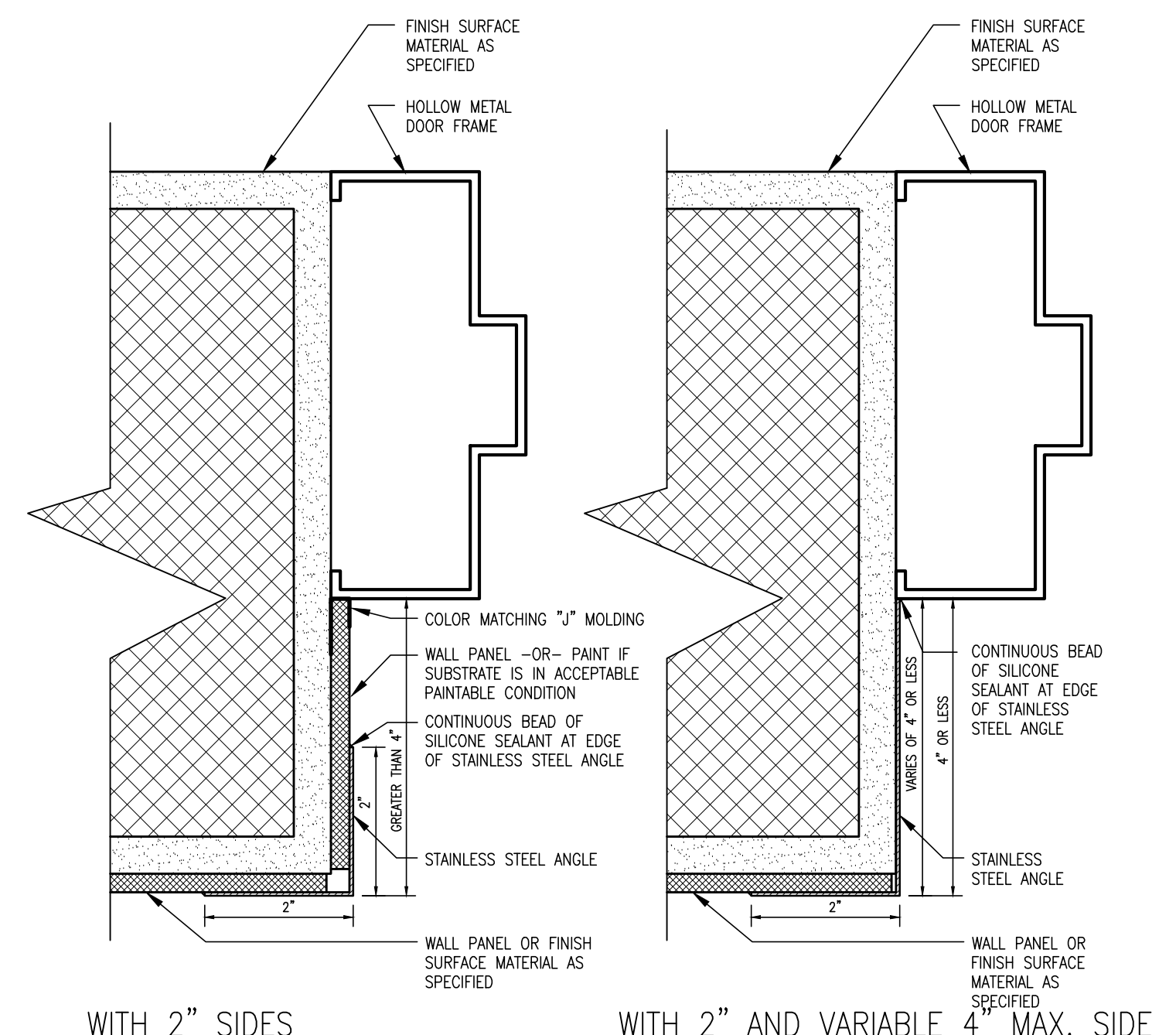
B PLAN
6"=1'-0"

13 DETAIL @ STAINLESS STEEL WRAP/ CORNER GUARD
A5.01 3" = 1'-0"



6 CORNER GUARD
A5.01 3/4" = 1'-0"

11 LOCKER INSTALLATION DETAIL
A5.01 3/4" = 1'-0"



WITH 2" SIDES

WITH 2" AND VARIABLE 4" MAX. SIDE